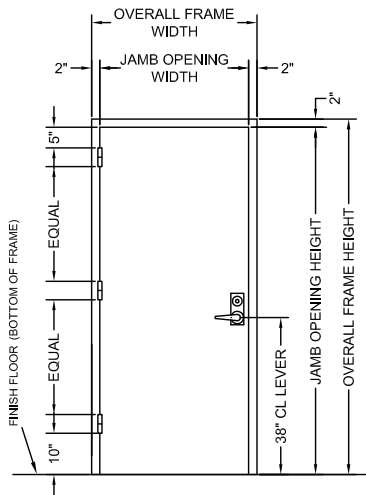




# HOUSTON-STARR DOORS, LLC

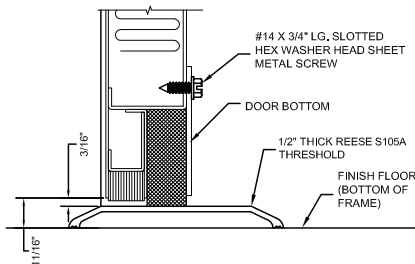
## STOCK STC/SCIF DOOR PROGRAM



- **Single Doors** sized as both 3070 and 3080 lab rated STC 50 and 52 Doors
- **Double Doors** sized as both 6070 and 6080 lab rated STC 50 Doors
- Houston-Starr maintains custody from our warehouse to the jobsite providing the fastest lead-times in the industry.
- **Mid-Atlantic service area lead-times** are dependent on specific job requirements and size of project.
- **Wall Conditions** The partition can be prebuilt using our split jamb frame. We are able to accommodate wall throat sizes ranging from 5" to 12".
- **Complete Opening Installation** by Houston-Starr's factory certified installation team allows your client to have a high quality install to ensuring your sound door assembly performs and your client can focus on their mission.

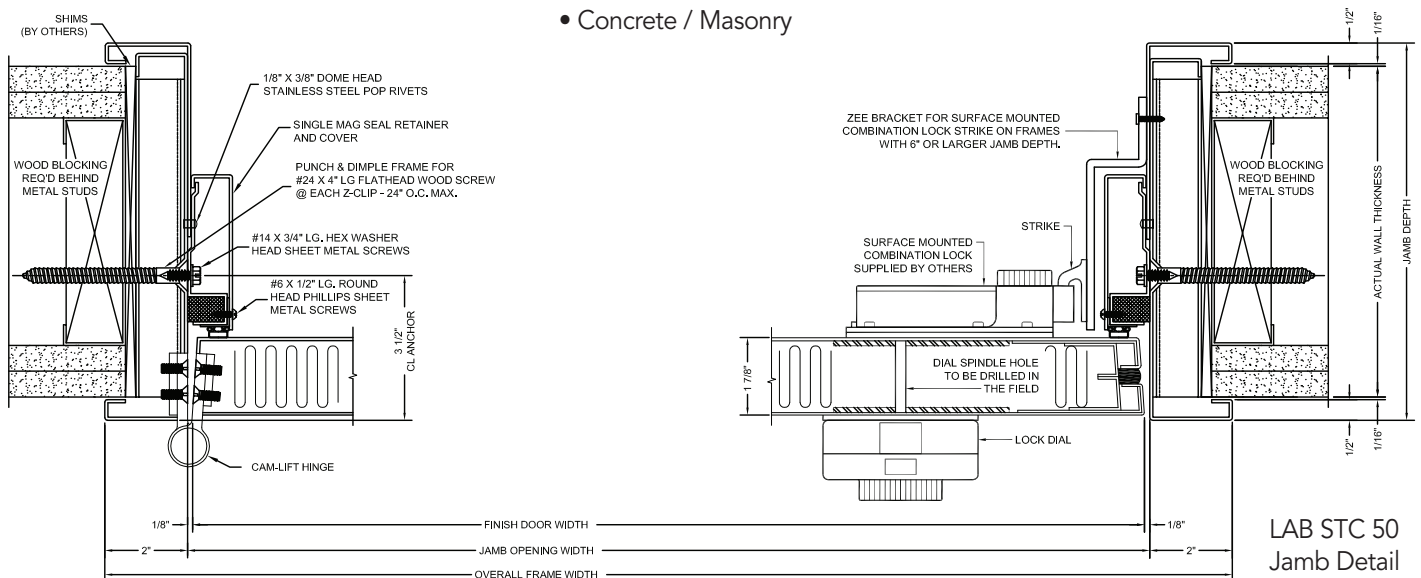
### HARDWARE OPTIONS AVAILABLE

- Lockmaster LKMs
- Sargent and Greenleaf 2890B
- Mortise Lockset
- Cylindrical Locksets
- Rim Exit Devices
- CDX-10
- Closers both Regular and Parallel Arm
- Other Hardware Applications maybe available upon special request.



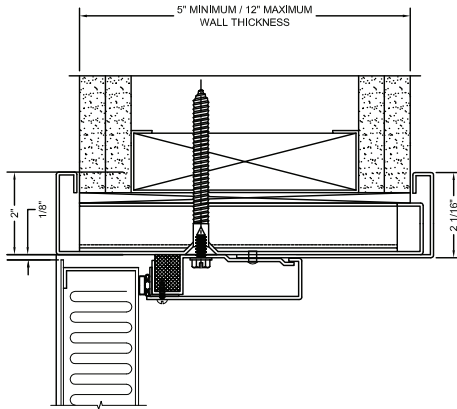
### ANCHOR OPTIONS

- Heavy Gauge Partition Wood Stud
- Metal Stud (Built-in)
- Concrete / Masonry





# HOUSTON-STARR DOORS, LLC



LAB STC Rated 50 Door Detail

Disclaimer: Houston-Starr is only providing general guidelines for construction of your partition as it relates to STC door installation. It is the responsibility of your drywall partition installer to properly design and build your partitions. Houston-Starr accepts no responsibility for partition design, engineering or installation. All lead-times are subject to the availability of stock material.

## DRYWALL PARTITION CONSTRUCTION RECOMMENDATIONS:

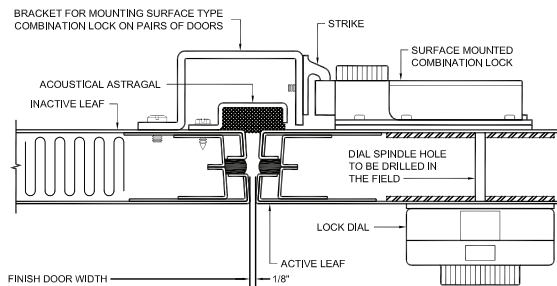
- While constructing your partition, please consider that your will door will weigh approximately 300 lbs
- Please note heavy gauge stud must run from the floor to the deck
- Please install wood blocking inside the steel stud to allow for the wood lag screws to anchor correctly to the partition.
- Rough opening requirements:
  - Rough Opening Width = Nominal Width of Hollow Metal Door + 3"
  - Rough Opening Height = Nominal Height of Hollow Metal Door + 1-1/2"

## FLOORING:

- Please make sure your floor is level to allow for the bottom door seal to operate correctly.
- This door cannot be installed on a raised floor, a partition must be built underneath the opening to support the weight of your door and frame assembly.

## PAINTING:

- Please make sure that your paint is fully cured before coming in contact with the sound seals. Typically latex paints take at least 30 days to fully cure. Please check with your paint manufacturer for your specific curing time.
- Please make sure not to paint any of the seal or hardware on the STC door. Painting the seals will damage the gasketing and could impact your acoustical performance.



# HOUSTON-STARR DOORS, LLC

HOUSTON-STARR DOORS, LLC  
22660 Executive Drive, Suite 122  
Sterling, VA 20166

Phone: (571) 491-7522  
Fax: 703-437-3168  
Email: stcdoors@houstonstarr.com

[houstonstarr.com](http://houstonstarr.com)